



# EndExam

## QUESTION & ANSWER

Accurate study guides, High passing rate!



We offer free update service for one year!

<http://www.endexam.com>

**Exam** : **1Y0-A22**

**Title** : Citrix XenApp 6.5 Advanced  
Administration

**Version** : DEMO

1.An administrator needs to validate the data store in a XenApp farm.

The administrator should use the DSCHECK command with the /CLEAN parameter after \_\_\_\_\_.

(Choose the correct option to complete the sentence.)

- A.restoring the data store
- B.backing up the data store
- C.restarting the XenApp server
- D.restarting the IMA Service on the data collector

**Answer: B**

2.Scenario: An administrator in a XenApp farm is in the process of replacing a couple of the failed XenApp servers in the farm. The administrator has been instructed to execute the DSCHECK command once the servers have been replaced.

What will be the outcome of executing the DSCHECK command?

- A.Recover the local data store
- B.Purge corrupt local host cache entries
- C.Purge the data store of incorrect entries
- D.Display information about servers in the farm

**Answer: C**

3.Scenario: An administrator migrated the data store of a Citrix XenApp 6.5 server farm from Microsoft SQL Server Express on XenApp server XAS01 to a separate Microsoft SQL Server 2008 cluster.

The administrator tested the move, noted that the cluster is running well and found no errors.

None of the XenApp 6.5 servers can connect to the new location of the data store.

In this scenario, when should the administrator use the DSCHECK command?

- A.After restarting the data collector
- B.After using the DSMMAINT command
- C.After running the QFARM command
- D.After using the CHANGE CLIENT command

**Answer: B**

4.When should an administrator use the DSCHECK command line utility?

- A.To fix errors on server entries in the data store
- B.To fix errors related to configuring Proxy Authentication
- C.To fix errors in the local host cache on each XenApp 6.5 server
- D.To generate a report of logon/logoff activity for a XenApp 6.5 server

**Answer: A**

5.Scenario: An administrator has configured a XenApp Web site and customized the footer text of the site to reflect the required customer-specific hyperlinks. The administrator now plans to back up the site.

Which file must the administrator back up?

- A.Default.ica
- B.Web.config

- C.Repair.SFO
- D.WebInterface.conf
- E.LoginMainFormFoot.inc

**Answer: D**

6.After repairing a XenApp Web site, an administrator notices that the customized footer text is missing. Which file must the administrator restore from backup?

- A.Default.ica
- B.Web.config
- C.Repair.SFO
- D.WebInterface.conf
- E.LoginMainFormFoot.inc

**Answer: D**

7.Scenario: An administrator used the Server Configuration Tool to install a Microsoft SQL Server Express data store database automatically as part of a XenApp 6.5 farm installation. The initial configuration consisted of a single zone and servers in a single physical location. The administrator added an equal number of servers and users to the farm at a second physical location over a WAN.

Which action would require the administrator to migrate the data store database from Microsoft SQL Server Express to Microsoft SQL Server?

- A.Adding an additional zone to the farm
- B.Replicating the data store to a second database server
- C.Moving the data store from local storage to SAN storage
- D.Adding the configuration logging database to the same SQL server

**Answer: B**

8.Scenario: An administrator used the Server Configuration Tool to install a Microsoft SQL Server Express data store database automatically as part of a XenApp 6.5 farm installation. The initial configuration consisted of a single zone and servers in a single physical location. The administrator added an equal number of servers and users to the farm at a second physical location over a WAN.

Which action would require the administrator to migrate the data store database from Microsoft SQL Server Express to Microsoft SQL Server?

- A.Adding an additional zone to the farm
- B.Mirroring the SQL database to a second SQL server
- C.Moving the database from local storage to SAN storage
- D.Adding the configuration logging database to the same SQL server

**Answer: B**

9.Scenario: An administrator used the Server Configuration Tool to install a Microsoft SQL Server Express data store database automatically as part of a XenApp 6.5 farm installation. The initial configuration consisted of a single zone and servers in a single physical location. The administrator added an equal number of servers and users to the farm at a second physical

location over a WAN.

Which new requirement would require the administrator to migrate the data store database from Microsoft SQL Server Express to Microsoft SQL Server?

- A.Implementing database mirroring
- B.Adding an additional zone to the farm
- C.Moving the database from local storage to SAN storage
- D.Adding the configuration logging database to the same SQL server

**Answer:** A

10.Scenario: A XenApp Administrator in an enterprise environment plans to use Access Gateway to secure ICA connections from the external network. The Access Gateway is in the DMZ using ICA proxy mode.

Which two locations for these components would be the most secure? (Choose two.)

- A.Place the XML broker in the DMZ.
- B.Place the Web Interface in the DMZ.
- C.Place the XML broker in the internal network.
- D.Place the Web Interface in the internal network.

**Answer:** CD

11.Scenario: A XenApp Administrator in a small environment plans to use Access Gateway to secure ICA connections from an external network. The Access Gateway is in the DMZ in ICA proxy mode. The environment requires minimum configuration to secure connections from the Web Interface server to the XML broker server.

Where should the administrator place the Web Interface server and XML broker?

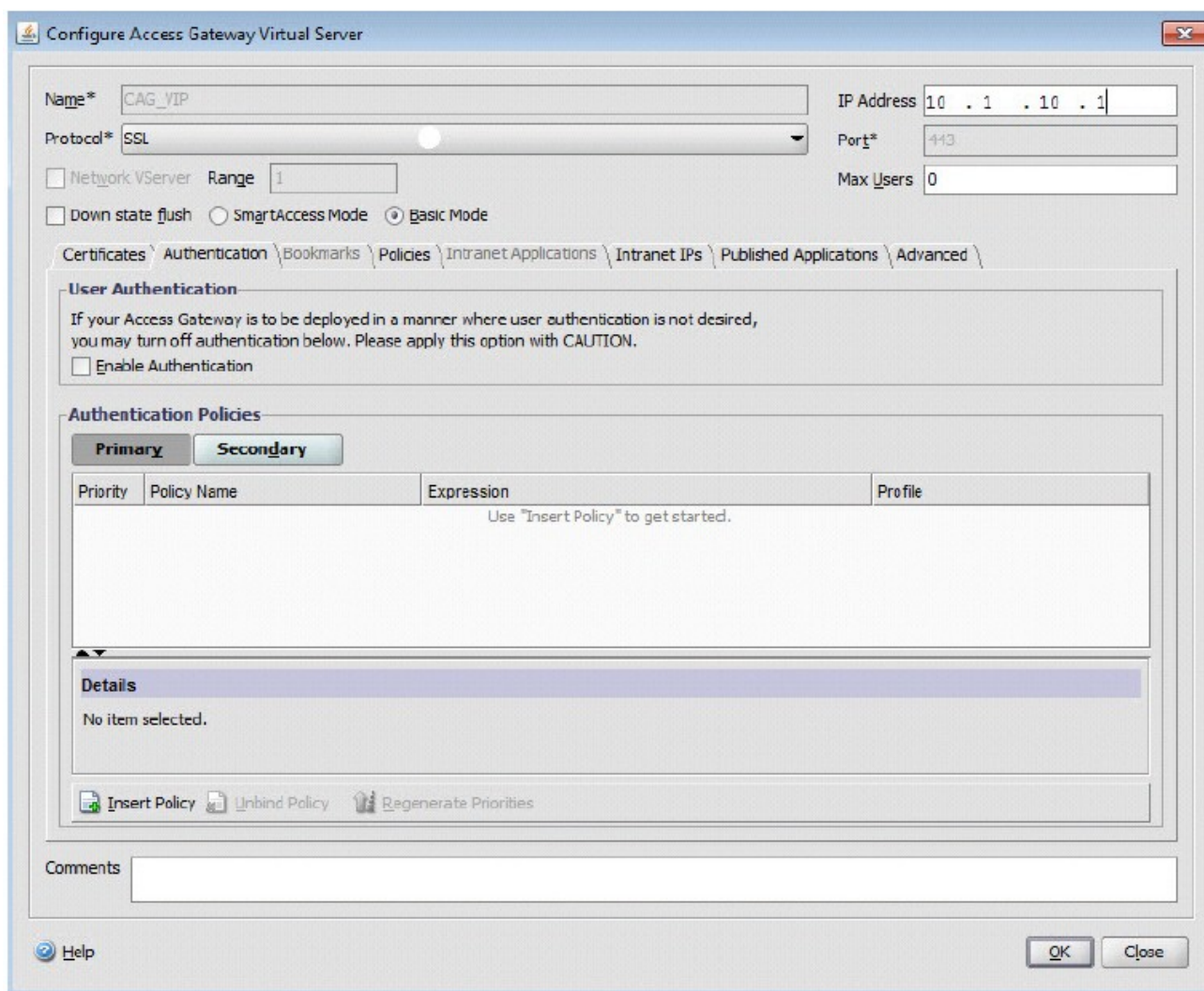
- A.On one server and place the server in the DMZ
- B.On separate servers and place the servers in the DMZ
- C.On one server and place the server in the internal network
- D.On separate servers and place the servers in the internal network

**Answer:** C

12.In order for the Web Interface server to correctly work with the Access Gateway Enterprise Edition configuration in the attached exhibit,

the administrator must configure the authentication point at \_\_\_\_\_. (Choose the correct option to complete the sentence.)

Case Study Title (Case Study):



- A.LDAP
- B.RADIUS
- C.the Web Interface
- D.the Access Gateway

**Answer: C**

13.Which two methods can an administrator use to configure Web Interface in high availability mode?  
(Choose two.)

- A.Windows Cluster services
- B.NetScaler Load Balancing feature
- C.Windows Load Balancing services
- D.NetScaler Access Gateway feature

**Answer: BC**

14.A XenApp Administrator plans to use Citrix NetScaler to load balance Web Interface servers.  
Which persistence setting should the administrator choose to correctly configure high availability  
for Web Interface?

- A.NOCE

- B.DESTIP
- C.SOURCEIP
- D.COOKIEINSERT

**Answer: D**

15.Scenario: A XenApp Administrator of a 100-server farm needs to apply Citrix and vendor hotfixes on a monthly basis, and a server restart is always required. The administrator needs to automate this process but does NOT have a third party tool available.

Which two tasks should the administrator complete to guarantee that updates will be applied successfully? (Choose two.)

- A.Prohibit logons and notify users.
- B.Restart the server and install hotfixes.
- C.Apply application load evaluators and notify users.
- D.Log off all users from servers and schedule a .EXE setup file installation.

**Answer: AB**