



# EndExam

## QUESTION & ANSWER

Accurate study guides, High passing rate!



We offer free update service for one year!

<http://www.endexam.com>

**Exam** : **4A0-102**

**Title** : Alcatel-Lucent Border  
Gateway Protocol

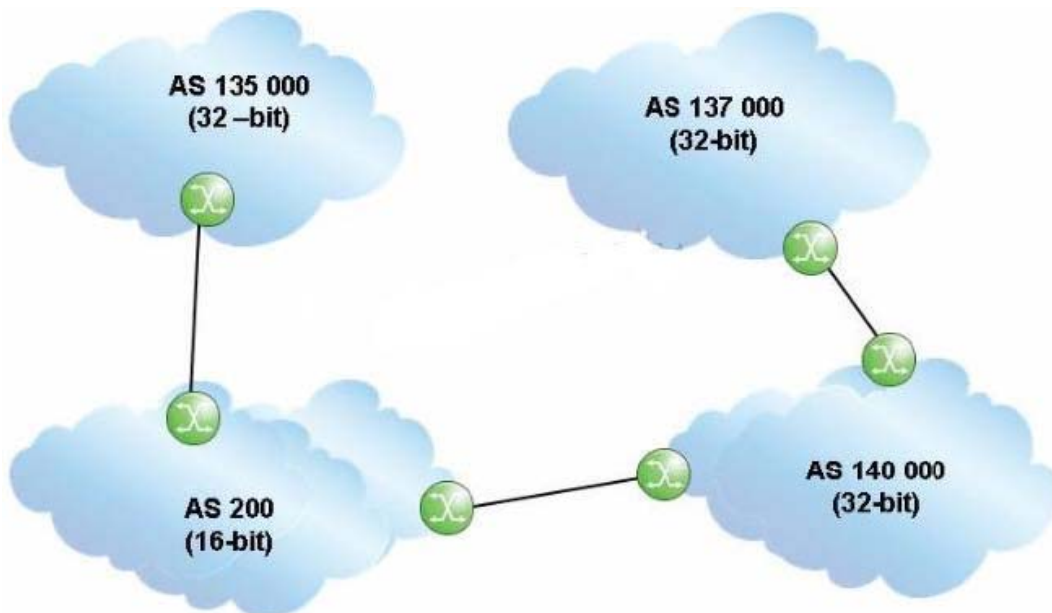
**Version** : DEMO

1. Upon the successful establishment of a TCP session between peers, what type of BGP message is exchanged?

- A. OpenSent
- B. Keepalive
- C. Open
- D. Notification
- E. Update

**Answer: C**

2. Click the exhibit.



An update travels from AS 135000 to AS 137000, traversing both 32-bit and 16-bit AS paths. What will the AS Path be when the update reaches AS 137000?

- A. 140000 200 135000
- B. 137000 140000 200 135000
- C. 140000 23456 135000
- D. 135000 200 140000

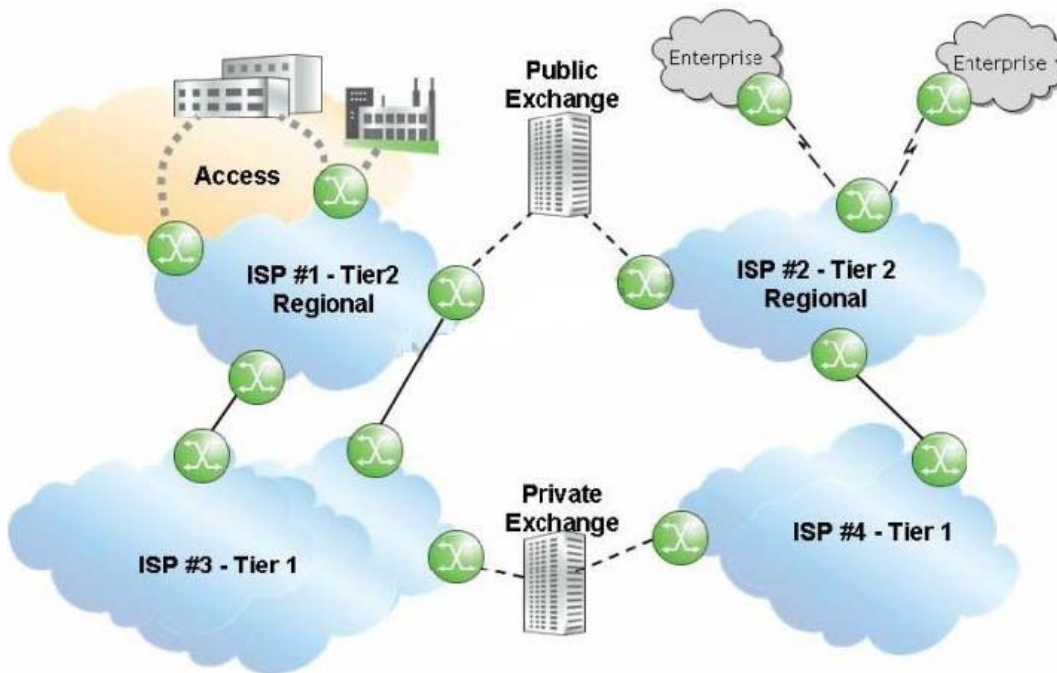
**Answer: A**

3. Which of the following is FALSE regarding the 16-bit public autonomous system numbers?

- A. They are allocated to the RIRs by ICANN/IANA.
- B. They are used when connecting ASs on the Internet.
- C. They range from 1 to 56319.
- D. They are assigned by the ISPs for enterprise networks.

**Answer: D**

4. Click the exhibit.

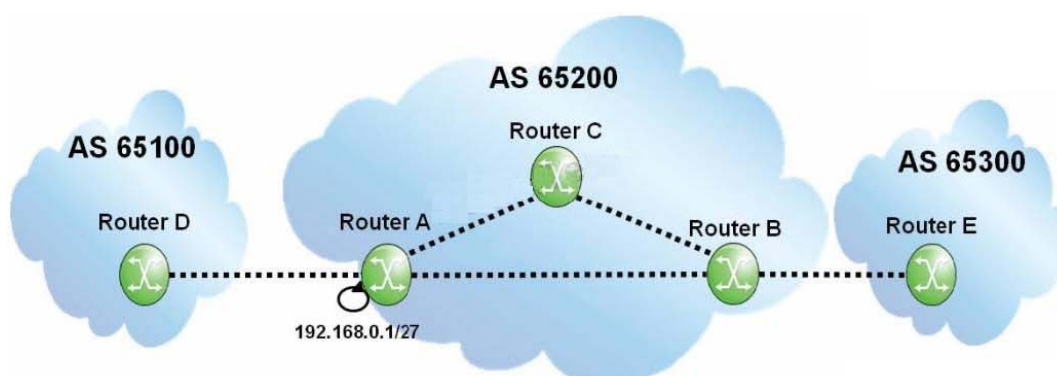


Given that ISP 1 and ISP 2 are Tier 2 providers, and that ISP 3 and ISP 4 are Tier 1 providers, what is the most likely relationship between the ISPs?

- A. ISP 1 and ISP 2 have a public transit relationship, while ISP 3 and ISP 4 have a private transit relationship.
- B. ISP 1 and ISP 2 have a private transit relationship, while ISP 3 and ISP 4 have a public transit relationship.
- C. ISP 1 and ISP 2 have a private peering relationship, while ISP 3 and ISP 4 have a public peering relationship.
- D. ISP 1 and ISP 2 have a public peering relationship, while ISP 3 and ISP 4 have a private peering relationship.

**Answer: D**

5. Click the exhibit.



If router A originates an update for prefix 192.168.0.1/27, what will the update contain when it reaches router B?

- A. AS Path of 65200, local-preference of 100.
- B. AS Path of 65200, local-preference of None.

- C. Null AS Path, local-preference of 100.
- D. Null AS Path, local-preference of None.

**Answer: C**