



# EndExam

## QUESTION & ANSWER

Accurate study guides, High passing rate!



We offer free update service for one year!  
<http://www.endexam.com>

**Exam : KCNA**

**Title :** Kubernetes and Cloud  
Native Associate (KCNA)

**Version : DEMO**

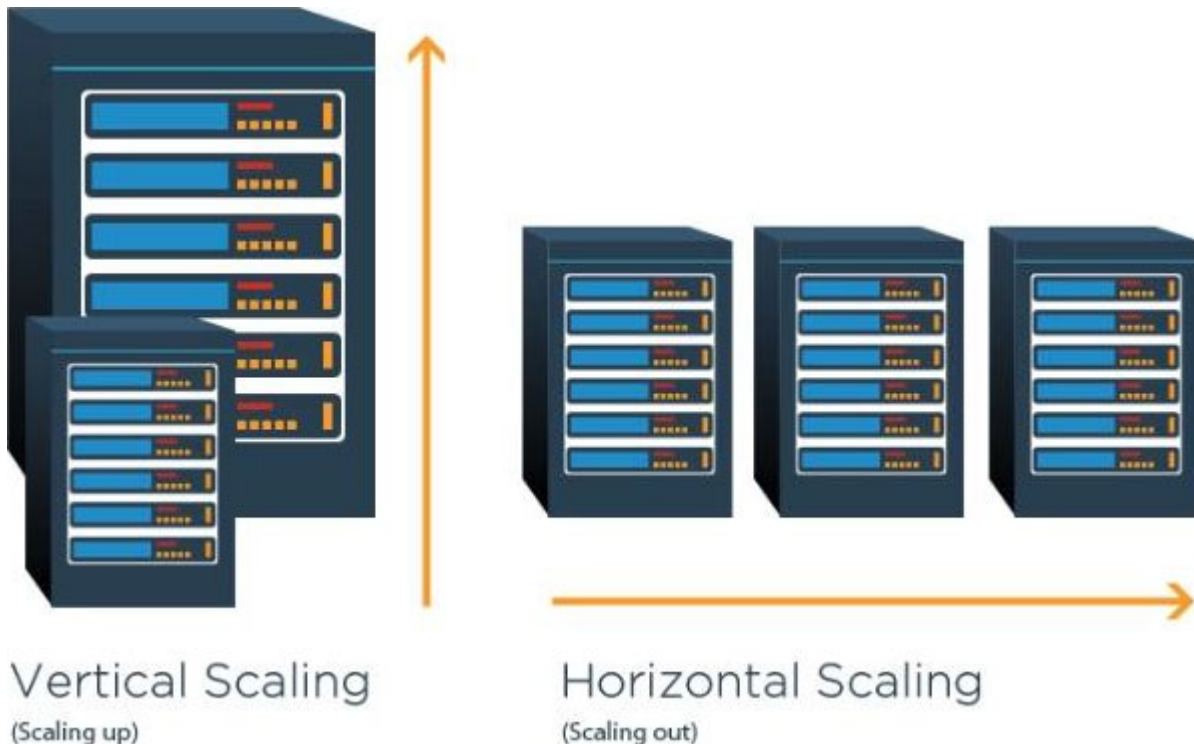
1. An application that is nearing its usage limit. To increase the amount of users it can handle, you allocate additional memory resources to each instance of the application.

What type of scaling is this?

- A. Horizontal Scaling
- B. Cluster Autoscaling
- C. Recursive Scaling
- D. Vertical Scaling

**Answer: D**

**Explanation:**



Graphical user interface, diagram

Description automatically generated

2. Which of the following best describes a cloud-native app?

- A. An application where all logic is coded into a single large binary.
- B. An application that publishes an HTTPS web front-end.
- C. An application that takes advantages of cloud computing frameworks and their loosely coupled cloud services.
- D. An application that leverages services that are native to public cloud platforms such as Azure, GCP, and/or AWS.

**Answer: C**

**Explanation:**

Cloud-native apps leverage cloud computing frameworks and tend to be microservices based, where individual components of the app are coded as individual.

3. Which project in this list is a leading project in the observability space?

- A. Jaeger

- B. Vitess  
C. Argo  
D. Kubernetes

**Answer: A**

**Explanation:**

<https://github.com/cncf/landscape#trail-map>



## CLOUD NATIVE TRAIL MAP

The Cloud Native Landscape [\[cncf.io\]](https://github.com/cncf/landscape) has a large number of options. This Cloud Native Trail Map is a recommended process for leveraging open source, cloud native technologies. At each step, you can choose a vendor-supported offering or do it yourself, and everything after step #3 is optional based on your circumstances.

### HELP ALONG THE WAY

#### A. Training and Certification

Consider training offerings from CNCF and then take the exam to become a Certified Kubernetes Administrator or a Certified Kubernetes Application Developer [cncf.io/training](https://cncf.io/training)

#### B. Consulting Help

If you want assistance with Kubernetes and the surrounding ecosystem, consider leveraging a Kubernetes Certified Service Provider [cncf.io/kcsp](https://cncf.io/kcsp)

#### C. Join CNCF's End User Community

For companies that don't offer cloud native services externally [cncf.io/enduser](https://cncf.io/enduser)

### WHAT IS CLOUD NATIVE?

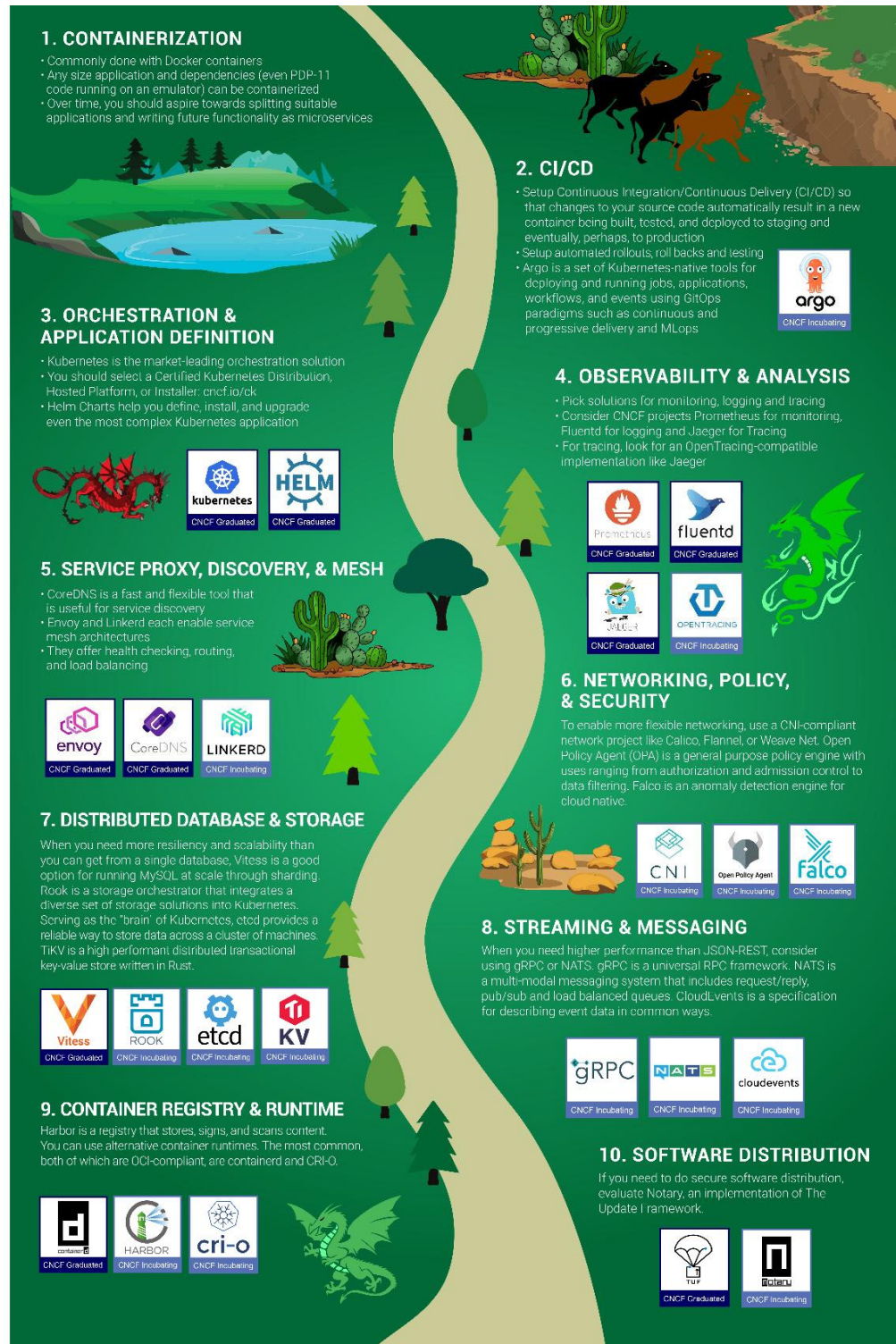
Cloud native technologies empower organizations to build and run scalable applications in modern, dynamic environments such as public, private, and hybrid clouds. Containers, service meshes, microservices, immutable infrastructure, and declarative APIs exemplify this approach.

These techniques enable loosely coupled systems that are resilient, manageable, and observable. Combined with robust automation, they allow engineers to make high-impact changes frequently and predictably with minimal toil.

The Cloud Native Computing Foundation seeks to drive adoption of this paradigm by fostering and sustaining an ecosystem of open source, vendor-neutral projects. We democratize state-of-the-art patterns to make these innovations accessible for everyone.

[cncf.io](https://cncf.io)

v20200501



4.To specify a Kubernetes object which language is used?

- A. JSON
- B. Go
- C. YAML
- D. Node
- E. Python

**Answer: C**

**Explanation:**

<https://kubernetes.io/docs/concepts/overview/working-with-objects/kubernetes-objects/>

## Understanding Kubernetes Objects

This page explains how Kubernetes objects are represented in the Kubernetes API, and how you can express them in `.yaml` format.

Graphical user interface, text

Description automatically generated

5.What is OPA?

- A. Open Permission Agent
- B. Online Policy Audit
- C. Open Policy Agent
- D. Offline Policy Accessor

**Answer: C**

**Explanation:**

<https://www.cncf.io/projects/open-policy-agent-opa/>



About

Projects

Training

Community

Blog & News

Join

PROJECTS

## Open Policy Agent (OPA)



Open Policy Agent

**An open source, general-purpose policy engine.**

Open Policy Agent (OPA) was accepted to CNCF on **March 29, 2018** and is at the **Graduated** project maturity level.

Graphical user interface, text, application, email

Description automatically generated